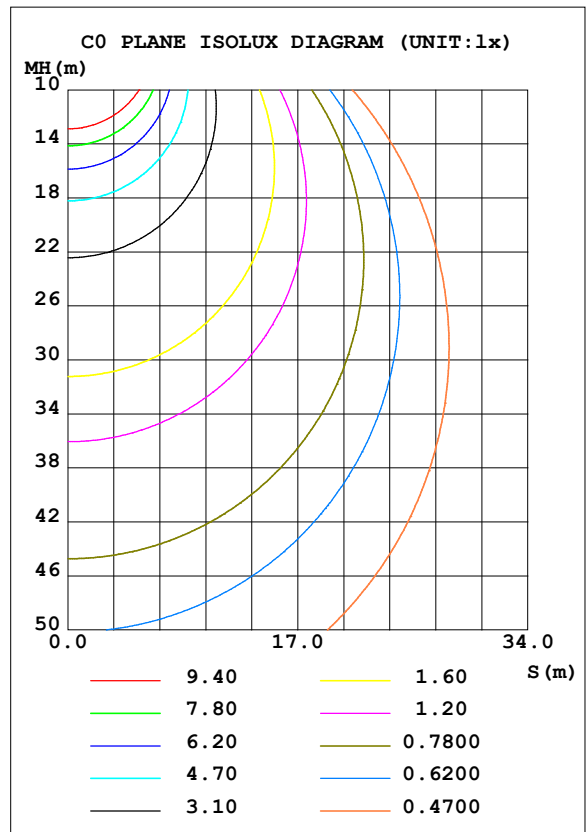
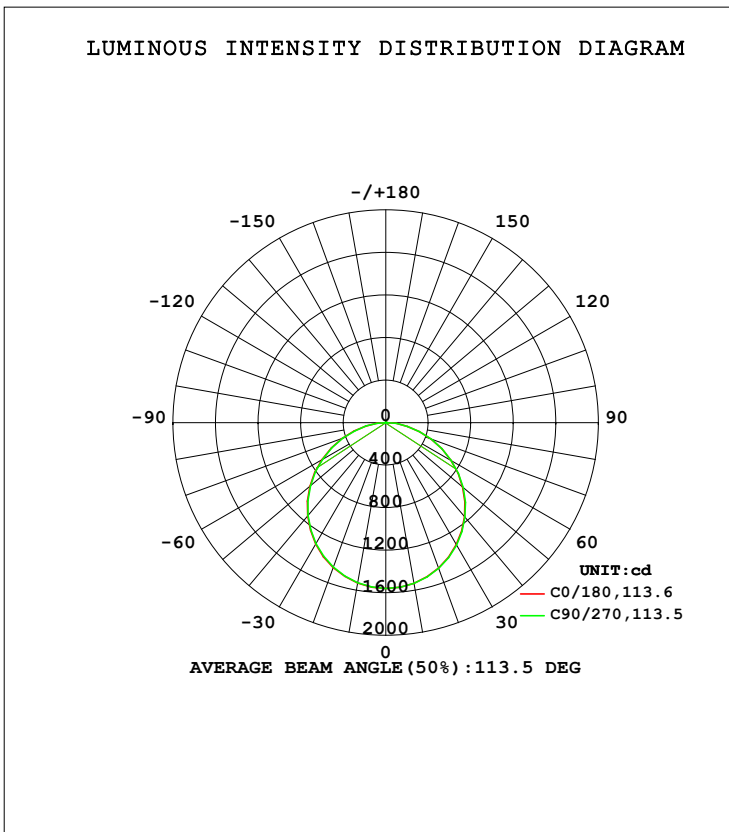


LUMINAIRE PHOTOMETRIC TEST REPORT

| | | |
|--|----------|------------------|
| Test:U:220.25V I:0.2149A P:46.021W PF:0.9725 Freq:49.99Hz Lamp Flux:4557.46x1 lm | | |
| NAME: ROMA -158100 | TYPE:LED | WEIGHT: |
| SPEC.:6000K | DIM.: | SERIAL No.:01 |
| MANUFACTURE:BBT LIGHTING | SUR.: | Shielding Angle: |

| DATA OF LAMP | | PHOTOMETRIC DATA | | | |
|-------------------|------------|------------------|--------|---------------------|-----------|
| MODEL | PL6060-50W | Imax (cd) | 1560 | S/MH (C0/180) | 1.26 |
| NOMINAL POWER (W) | 48 | LOR (%) | 100.0 | S/MH (C90/270) | 1.25 |
| RATED VOLTAGE (V) | 220.0 | TOTAL FLUX (lm) | 4557.5 | η UP, DN (C0-180) | 0.1, 50.4 |
| NOMINAL FLUX (lm) | 4557.46 | CIE CLASS | DIRECT | η UP, DN (C180-360) | 0.1, 49.3 |
| LAMPS INSIDE | 1 | η up (%) | 0.3 | CIBSE SHR NOM | 1.25 |
| TEST VOLTAGE (V) | 220.0 | η down (%) | 99.7 | CIBSE SHR MAX | 1.35 |



C Range: 0 - 360DEG
 C Interval: 90.0DEG
 Test Speed: HIGH
 Temperature: 25.3DEG
 Operators: King
 Test Date: 2023-06-08

γ Range: 0 - 120DEG
 γ Interval: 5.0DEG
 Test System: EVERFINE GO-2000B_V1 SYSTEM V2.0.404.6
 Humidity: 65.0%
 Test Distance: 9.950m [K=1.0251]
 Remarks:

ZONAL FLUX DIAGRAM

ZONAL FLUX DIAGRAM:

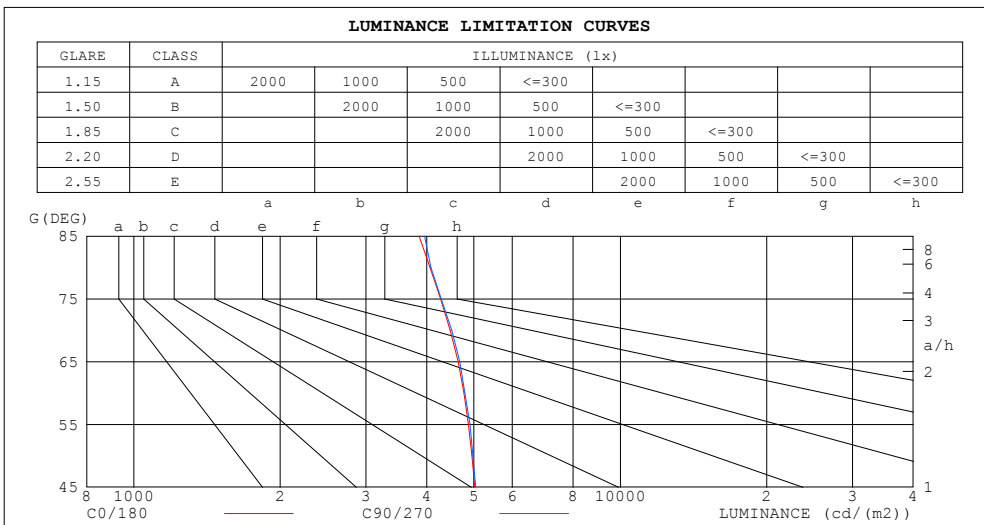
| γ | C0 | C90 | C180 | C270 | | | | γ | Φ zone | Φ total | %lum,lamp |
|----------|-----------------------|-------|-------|-------|--|--|--|----------|-------------|--------------|-----------|
| 10 | 1534 | 1536 | 1532 | 1530 | | | | 0- 10 | 147.6 | 147.6 | 3.24,3.24 |
| 20 | 1455 | 1459 | 1451 | 1447 | | | | 10- 20 | 423.1 | 570.7 | 12.5,12.5 |
| 30 | 1326 | 1331 | 1319 | 1314 | | | | 20- 30 | 642.2 | 1213 | 26.6,26.6 |
| 40 | 1154 | 1160 | 1144 | 1138 | | | | 30- 40 | 776.2 | 1989 | 43.6,43.6 |
| 50 | 945.4 | 950.7 | 933.3 | 926.3 | | | | 40- 50 | 808.4 | 2797 | 61.4,61.4 |
| 60 | 708.4 | 711.2 | 692.8 | 686.3 | | | | 50- 60 | 735.0 | 3532 | 77.5,77.5 |
| 70 | 454.0 | 457.8 | 436.9 | 430.6 | | | | 60- 70 | 567.5 | 4100 | 90,90 |
| 80 | 209.6 | 210.6 | 193.0 | 187.8 | | | | 70- 80 | 338.0 | 4438 | 97.4,97.4 |
| 90 | 9.510 | 11.39 | 3.367 | 2.987 | | | | 80- 90 | 107.0 | 4545 | 99.7,99.7 |
| 100 | 3.080 | 2.310 | 2.871 | 2.905 | | | | 90-100 | 3.876 | 4549 | 99.8,99.8 |
| 110 | 3.794 | 3.301 | 3.978 | 4.020 | | | | 100-110 | 3.461 | 4552 | 99.9,99.9 |
| 120 | 4.501 | 4.247 | 4.974 | 5.004 | | | | 110-120 | 4.203 | 4556 | 100,100 |
| 130 | 0 | 0 | 0 | 0 | | | | 120-130 | 1.082 | 4557 | 100,100 |
| 140 | 0 | 0 | 0 | 0 | | | | 130-140 | 0 | 4557 | 100,100 |
| 150 | 0 | 0 | 0 | 0 | | | | 140-150 | 0 | 4557 | 100,100 |
| 160 | 0 | 0 | 0 | 0 | | | | 150-160 | 0 | 4557 | 100,100 |
| 170 | 0 | 0 | 0 | 0 | | | | 160-170 | 0 | 4557 | 100,100 |
| 180 | 0 | 0 | 0 | 0 | | | | 170-180 | 0 | 4557 | 100,100 |
| DEG | LUMINOUS INTENSITY:cd | | | | | | | | UNIT:lm | | |

C Range: 0 - 360DEG
 C Interval: 90.0DEG
 Test Speed: HIGH
 Temperature:25.3DEG
 Operators:King
 Test Date:2023-06-08

γ Range: 0 - 120DEG
 γ Interval: 5.0DEG
 γ Test System:EVERFINE GO-2000B_V1 SYSTEM V2.0.404.6
 Humidity:65.0%
 Test Distance:9.950m [K=1.0251]
 Remarks:

LUMINANCE LIMITATION CURVES

| | | |
|--|----------|------------------|
| Test:U:220.25V I:0.2149A P:46.021W PF:0.9725 Freq:49.99Hz Lamp Flux:4557.46x1 lm | | |
| NAME: ROMA-158100 | TYPE:LED | WEIGHT: |
| SPEC.:6000K | DIM.: | SERIAL No.:01 |
| MANUFACTURE:BBT LIGHTING | SUR.: | Shielding Angle: |



| LUMINANCE cd/(m2) | | |
|-------------------|--------|---------|
| G (DEG) | C0/180 | C90/270 |
| 85 | 3857 | 3959 |
| 80 | 4063 | 4083 |
| 75 | 4268 | 4285 |
| 70 | 4470 | 4506 |
| 65 | 4643 | 4676 |
| 60 | 4771 | 4789 |
| 55 | 4872 | 4910 |
| 50 | 4952 | 4980 |
| 45 | 5022 | 5045 |

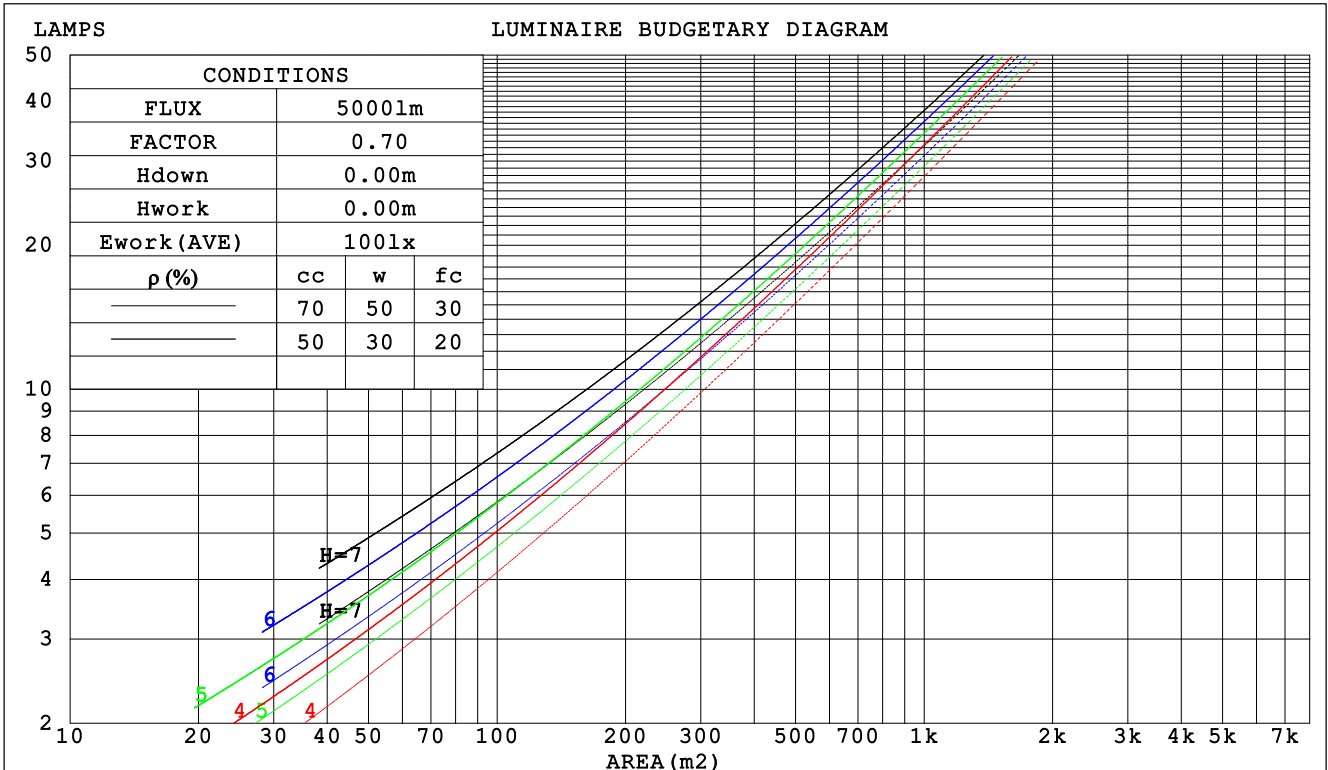
C Range: 0 - 360DEG
 C Interval: 90.0DEG
 Test Speed: HIGH
 Temperature:25.3DEG
 Operators:King
 Test Date:2023-06-08

γ Range: 0 - 120DEG
 γ Interval: 5.0DEG
 Test System:EVERFINE GO-2000B_V1 SYSTEM V2.0.404.6
 Humidity:65.0%
 Test Distance:9.950m [K=1.0251]
 Remarks:

CU AND LUMINAIRE BUDGETARY ESTIMATE DIAGRAM

| | | |
|--|----------|------------------|
| Test:U:220.25V I:0.2149A P:46.021W PF:0.9725 Freq:49.99Hz Lamp Flux:4557.46x1 lm | | |
| NAME: ROMA -158100 | TYPE:LED | WEIGHT: |
| SPEC.:6000K | DIM.: | SERIAL No.:01 |
| MANUFACTURE:BBT LIGHTING | SUR.: | Shielding Angle: |

| ρcc | 80% | | | 70% | | | 50% | | | 30% | | | 10% | | | 0 |
|------|---------------------------------|------|------|------|------|------|------|------|------|------|------|------|------|------|------|-----|
| ρw | 50% | 30% | 10% | 50% | 30% | 10% | 50% | 30% | 10% | 50% | 30% | 10% | 50% | 30% | 10% | 0 |
| ρfc | 20% | | | 20% | | | 20% | | | 20% | | | 20% | | | 0 |
| RCR | RCR:Room Cavity Ratio | | | | | | | | | | | | | | | |
| | Coefficients of Utilization(CU) | | | | | | | | | | | | | | | |
| 0.0 | 1.19 | 1.19 | 1.19 | 1.16 | 1.16 | 1.16 | 1.11 | 1.11 | 1.11 | 1.06 | 1.06 | 1.06 | 1.02 | 1.02 | 1.02 | .00 |
| 1.0 | 1.03 | .99 | .95 | 1.01 | .97 | .93 | .97 | .93 | .90 | .93 | .90 | .88 | .89 | .87 | .85 | .83 |
| 2.0 | .90 | .83 | .77 | .88 | .82 | .76 | .84 | .79 | .74 | .81 | .76 | .72 | .78 | .74 | .71 | .69 |
| 3.0 | .79 | .70 | .64 | .77 | .69 | .63 | .74 | .67 | .62 | .71 | .66 | .61 | .69 | .64 | .60 | .58 |
| 4.0 | .70 | .61 | .54 | .68 | .60 | .54 | .66 | .58 | .53 | .63 | .57 | .52 | .61 | .56 | .51 | .49 |
| 5.0 | .62 | .53 | .46 | .61 | .52 | .46 | .59 | .51 | .45 | .57 | .50 | .45 | .55 | .49 | .44 | .42 |
| 6.0 | .56 | .47 | .40 | .55 | .46 | .40 | .53 | .45 | .40 | .51 | .45 | .39 | .50 | .44 | .39 | .37 |
| 7.0 | .51 | .42 | .36 | .50 | .41 | .35 | .48 | .41 | .35 | .47 | .40 | .35 | .45 | .39 | .35 | .33 |
| 8.0 | .46 | .38 | .32 | .45 | .37 | .32 | .44 | .37 | .31 | .43 | .36 | .31 | .42 | .36 | .31 | .29 |
| 9.0 | .42 | .34 | .29 | .42 | .34 | .28 | .41 | .33 | .28 | .39 | .33 | .28 | .38 | .32 | .28 | .26 |
| 10.0 | .39 | .31 | .26 | .39 | .31 | .26 | .38 | .30 | .26 | .37 | .30 | .25 | .36 | .30 | .25 | .24 |



C Range: 0 - 360DEG
 C Interval: 90.0DEG
 Test Speed: HIGH
 Temperature:25.3DEG
 Operators:King
 Test Date:2023-06-08

γ Range: 0 - 120DEG
 γ Interval: 5.0DEG
 Test System:EVERFINE GO-2000B_V1 SYSTEM V2.0.404.6
 Humidity:65.0%
 Test Distance:9.950m [K=1.0251]
 Remarks:

WEC AND CCEC

| | | |
|--|----------|------------------|
| Test:U:220.25V I:0.2149A P:46.021W PF:0.9725 Freq:49.99Hz Lamp Flux:4557.46x1 lm | | |
| NAME: ROMA -158100 | TYPE:LED | WEIGHT: |
| SPEC.:6000K | DIM.: | SERIAL No.:01 |
| MANUFACTURE:BBT LIGHTING | SUR.: | Shielding Angle: |

| ρcc | 80% | | | 70% | | | 50% | | | 30% | | | 10% | | | 0 |
|------|-----------------------|------|------|------|------|------|----------------------------------|------|------|------|------|------|------|------|------|---|
| ρw | 50% | 30% | 10% | 50% | 30% | 10% | 50% | 30% | 10% | 50% | 30% | 10% | 50% | 30% | 10% | 0 |
| ρfc | 20% | | | 20% | | | 20% | | | 20% | | | 20% | | | 0 |
| RCR | RCR:Room Cavity Ratio | | | | | | Wall Exitance Coefficients (WEC) | | | | | | | | | |
| 0.0 | | | | | | | | | | | | | | | | |
| 1.0 | .317 | .180 | .057 | .310 | .177 | .056 | .297 | .170 | .054 | .284 | .164 | .053 | .273 | .158 | .051 | |
| 2.0 | .296 | .162 | .050 | .290 | .160 | .049 | .278 | .155 | .048 | .267 | .150 | .047 | .257 | .145 | .046 | |
| 3.0 | .273 | .145 | .044 | .268 | .143 | .043 | .257 | .139 | .042 | .247 | .136 | .042 | .238 | .132 | .041 | |
| 4.0 | .252 | .131 | .038 | .247 | .129 | .038 | .237 | .126 | .038 | .229 | .123 | .037 | .221 | .120 | .037 | |
| 5.0 | .232 | .118 | .034 | .228 | .117 | .034 | .220 | .114 | .034 | .212 | .112 | .033 | .205 | .109 | .033 | |
| 6.0 | .215 | .108 | .031 | .211 | .107 | .031 | .204 | .104 | .030 | .197 | .102 | .030 | .190 | .100 | .030 | |
| 7.0 | .200 | .099 | .028 | .197 | .098 | .028 | .190 | .096 | .028 | .184 | .094 | .027 | .178 | .092 | .027 | |
| 8.0 | .187 | .091 | .026 | .184 | .090 | .026 | .178 | .089 | .025 | .172 | .087 | .025 | .167 | .086 | .025 | |
| 9.0 | .175 | .085 | .024 | .172 | .084 | .024 | .167 | .082 | .023 | .162 | .081 | .023 | .157 | .080 | .023 | |
| 10.0 | .164 | .079 | .022 | .162 | .078 | .022 | .157 | .077 | .022 | .152 | .076 | .022 | .148 | .075 | .021 | |

| ρcc | 80% | | | 70% | | | 50% | | | 30% | | | 10% | | | 0 |
|------|-----------------------|------|------|------|------|------|---|------|------|------|------|------|------|------|------|---|
| ρw | 50% | 30% | 10% | 50% | 30% | 10% | 50% | 30% | 10% | 50% | 30% | 10% | 50% | 30% | 10% | 0 |
| ρfc | 20% | | | 20% | | | 20% | | | 20% | | | 20% | | | 0 |
| RCR | RCR:Room Cavity Ratio | | | | | | Ceiling Cavity Exitance Coefficients (CCEC) | | | | | | | | | |
| 0.0 | .193 | .193 | .193 | .165 | .165 | .165 | .112 | .112 | .112 | .065 | .065 | .065 | .021 | .021 | .021 | |
| 1.0 | .183 | .158 | .136 | .157 | .136 | .117 | .107 | .093 | .081 | .062 | .054 | .047 | .020 | .017 | .015 | |
| 2.0 | .175 | .134 | .100 | .150 | .115 | .086 | .103 | .080 | .060 | .059 | .046 | .035 | .019 | .015 | .011 | |
| 3.0 | .167 | .116 | .076 | .143 | .100 | .066 | .098 | .070 | .046 | .057 | .041 | .027 | .018 | .013 | .009 | |
| 4.0 | .160 | .103 | .060 | .137 | .089 | .052 | .094 | .062 | .037 | .054 | .036 | .022 | .018 | .012 | .007 | |
| 5.0 | .152 | .093 | .049 | .131 | .080 | .043 | .090 | .056 | .030 | .052 | .033 | .018 | .017 | .011 | .006 | |
| 6.0 | .145 | .084 | .041 | .125 | .073 | .036 | .086 | .051 | .025 | .050 | .030 | .015 | .016 | .010 | .005 | |
| 7.0 | .138 | .078 | .035 | .119 | .067 | .031 | .082 | .047 | .022 | .048 | .028 | .013 | .015 | .009 | .004 | |
| 8.0 | .132 | .072 | .031 | .113 | .062 | .027 | .078 | .044 | .019 | .046 | .026 | .011 | .015 | .008 | .004 | |
| 9.0 | .125 | .067 | .027 | .108 | .058 | .024 | .075 | .041 | .017 | .044 | .024 | .010 | .014 | .008 | .003 | |
| 10.0 | .120 | .063 | .025 | .103 | .054 | .021 | .072 | .038 | .015 | .042 | .023 | .009 | .014 | .007 | .003 | |

C Range: 0 - 360DEG
 C Interval: 90.0DEG
 Test Speed: HIGH
 Temperature:25.3DEG
 Operators:King
 Test Date:2023-06-08

γ Range: 0 - 120DEG
 γ Interval: 5.0DEG
 Test System:EVERFINE GO-2000B_V1 SYSTEM V2.0.404.6
 Humidity:65.0%
 Test Distance:9.950m [K=1.0251]
 Remarks:

UGR(Unified Glare Rating) Table

| Test:U:220.25V I:0.2149A P:46.021W PF:0.9725 Freq:49.99Hz Lamp Flux:4557.46x1 lm | | | | | | | | | | |
|--|------------------|------|------|------|----------|----------------|------|------------------|------|------|
| NAME: ROMA -158100 | | | | | TYPE:LED | | | WEIGHT: | | |
| SPEC.:6000K | | | | | DIM.: | | | SERIAL No.:01 | | |
| MANUFACTURE:BBT LIGHTING | | | | | SUR.: | | | Shielding Angle: | | |
| ceiling/cavity | 0.7 | 0.7 | 0.5 | 0.5 | 0.3 | 0.7 | 0.7 | 0.5 | 0.5 | 0.3 |
| walls | 0.5 | 0.3 | 0.5 | 0.3 | 0.3 | 0.5 | 0.3 | 0.5 | 0.3 | 0.3 |
| working plane | 0.2 | 0.2 | 0.2 | 0.2 | 0.2 | 0.2 | 0.2 | 0.2 | 0.2 | 0.2 |
| Room dimensions | Viewed crosswise | | | | | Viewed endwise | | | | |
| x = 2H y = 2H | 18.4 | 20.0 | 18.7 | 20.2 | 20.4 | 18.4 | 20.0 | 18.7 | 20.2 | 20.4 |
| 3H | 20.0 | 21.4 | 20.3 | 21.6 | 21.9 | 20.0 | 21.4 | 20.3 | 21.7 | 21.9 |
| 4H | 20.6 | 22.0 | 21.0 | 22.3 | 22.5 | 20.7 | 22.0 | 21.0 | 22.3 | 22.5 |
| 6H | 21.1 | 22.4 | 21.5 | 22.7 | 23.0 | 21.2 | 22.4 | 21.5 | 22.7 | 23.0 |
| 8H | 21.3 | 22.5 | 21.6 | 22.8 | 23.1 | 21.3 | 22.6 | 21.7 | 22.8 | 23.1 |
| 12H | 21.4 | 22.6 | 21.8 | 22.9 | 23.2 | 21.4 | 22.6 | 21.8 | 22.9 | 23.2 |
| 4H 2H | 19.1 | 20.4 | 19.4 | 20.7 | 20.9 | 19.1 | 20.4 | 19.4 | 20.7 | 20.9 |
| 3H | 20.8 | 22.0 | 21.2 | 22.3 | 22.6 | 20.8 | 22.0 | 21.2 | 22.3 | 22.6 |
| 4H | 21.6 | 22.7 | 22.0 | 23.0 | 23.3 | 21.6 | 22.7 | 22.0 | 23.0 | 23.4 |
| 6H | 22.2 | 23.2 | 22.6 | 23.5 | 23.9 | 22.2 | 23.2 | 22.6 | 23.6 | 23.9 |
| 8H | 22.4 | 23.3 | 22.9 | 23.7 | 24.1 | 22.5 | 23.4 | 22.9 | 23.7 | 24.1 |
| 12H | 22.6 | 23.4 | 23.0 | 23.8 | 24.2 | 22.6 | 23.5 | 23.1 | 23.8 | 24.3 |
| 8H 4H | 21.9 | 22.8 | 22.3 | 23.2 | 23.5 | 21.9 | 22.8 | 22.3 | 23.2 | 23.6 |
| 6H | 22.7 | 23.4 | 23.1 | 23.8 | 24.3 | 22.7 | 23.4 | 23.1 | 23.9 | 24.3 |
| 8H | 23.0 | 23.6 | 23.4 | 24.1 | 24.5 | 23.0 | 23.7 | 23.5 | 24.1 | 24.6 |
| 12H | 23.2 | 23.8 | 23.7 | 24.3 | 24.7 | 23.3 | 23.8 | 23.7 | 24.3 | 24.8 |
| 12H 4H | 21.9 | 22.7 | 22.3 | 23.1 | 23.5 | 21.9 | 22.7 | 22.4 | 23.1 | 23.6 |
| 6H | 22.7 | 23.4 | 23.2 | 23.8 | 24.3 | 22.8 | 23.4 | 23.2 | 23.9 | 24.3 |
| 8H | 23.1 | 23.7 | 23.6 | 24.1 | 24.6 | 23.1 | 23.7 | 23.6 | 24.2 | 24.6 |
| Variations with the observer position at spacings: | | | | | | | | | | |
| S = 1.0H | + 0.1 / - 0.2 | | | | | + 0.1 / - 0.2 | | | | |
| 1.5H | + 0.2 / - 0.3 | | | | | + 0.2 / - 0.3 | | | | |
| 2.0H | + 0.1 / - 0.3 | | | | | + 0.2 / - 0.3 | | | | |

CIE Pub.117, 4557 lm Total Lamp Luminous Flux Corrected ($8\log(F/F_0) = 5.3$)

C Range: 0 - 360DEG
C Interval: 90.0DEG
Test Speed: HIGH
Temperature:25.3DEG
Operators:King
Test Date:2023-06-08

γ Range: 0 - 120DEG
 γ Interval: 5.0DEG
Test System:EVERFINE GO-2000B_V1 SYSTEM V2.0.404.6
Humidity:65.0%
Test Distance:9.950m [K=1.0251]
Remarks:

UTILIZATION FACTORS TABLE

| | | |
|--|----------|------------------|
| Test:U:220.25V I:0.2149A P:46.021W PF:0.9725 Freq:49.99Hz Lamp Flux:4557.46x1 lm | | |
| NAME: ROMA -158100 | TYPE:LED | WEIGHT: |
| SPEC.:6000K | DIM.: | SERIAL No.:01 |
| MANUFACTURE:BBT LIGHTING | SUR.: | Shielding Angle: |

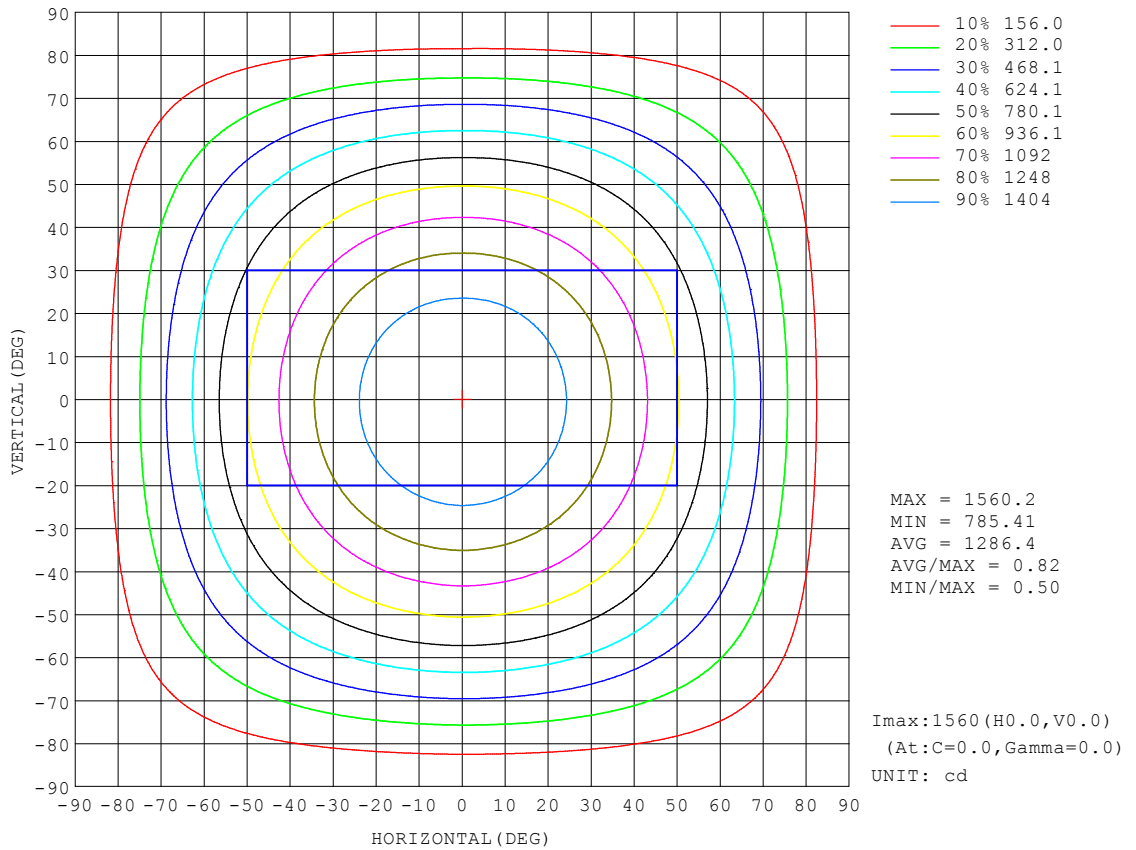
| REFLECTANCE | | | | | | | | | | |
|----------------------------------|--|-----|-----------|-----|-----|-----|---------------|-----|-----|--------|
| Ceiling | 0.8 | 0.8 | 0.8 | 0.7 | 0.7 | 0.7 | 0.5 | 0.5 | 0.5 | 0 |
| Walls | 0.7 | 0.5 | 0.3 | 0.7 | 0.5 | 0.3 | 0.7 | 0.5 | 0.3 | 0 |
| Working plane | 0.2 | 0.2 | 0.2 | 0.2 | 0.2 | 0.2 | 0.2 | 0.2 | 0.2 | 0 |
| ROOM INDEX | UTILIZATION FACTORS (PERCENT) $k(RI) \times RCR = 5$ | | | | | | | | | |
| k = 0.60 | 57 | 45 | 38 | 56 | 45 | 38 | 55 | 45 | 38 | 31 |
| 0.80 | 67 | 55 | 48 | 66 | 55 | 48 | 64 | 54 | 47 | 40 |
| 1.00 | 75 | 64 | 57 | 74 | 63 | 56 | 72 | 65 | 56 | 49 |
| 1.25 | 82 | 72 | 65 | 81 | 71 | 64 | 78 | 70 | 63 | 56 |
| 1.50 | 87 | 77 | 70 | 86 | 77 | 70 | 83 | 75 | 69 | 61 |
| 2.00 | 94 | 86 | 79 | 93 | 84 | 78 | 89 | 82 | 77 | 69 |
| 2.50 | 98 | 90 | 84 | 96 | 89 | 83 | 92 | 86 | 81 | 73 |
| 3.00 | 102 | 95 | 89 | 100 | 93 | 88 | 95 | 90 | 86 | 77 |
| 4.00 | 106 | 100 | 95 | 103 | 98 | 94 | 99 | 95 | 91 | 82 |
| 5.00 | 108 | 103 | 99 | 106 | 101 | 98 | 101 | 98 | 94 | 85 |
| ROOM INDEX | UF(total) | | | | | | | | | Direct |
| According to DIN EN 13032-2 2004 | | | Suspended | | | | SHRNOM = 1.25 | | | |

C Range: 0 - 360DEG
C Interval: 90.0DEG
Test Speed: HIGH
Temperature:25.3DEG
Operators:King
Test Date:2023-06-08

γ Range: 0 - 120DEG
 γ Interval: 5.0DEG
Test System:EVERFINE GO-2000B_V1 SYSTEM V2.0.404.6
Humidity:65.0%
Test Distance:9.950m [K=1.0251]
Remarks:

ISOCANDELA DIAGRAM

| | | |
|--|----------|------------------|
| Test:U:220.25V I:0.2149A P:46.021W PF:0.9725 Freq:49.99Hz Lamp Flux:4557.46x1 lm | | |
| NAME: ROMA -158100 | TYPE:LED | WEIGHT: |
| SPEC.:6000K | DIM.: | SERIAL No.:01 |
| MANUFACTURE:BBT LIGHTING | SUR.: | Shielding Angle: |

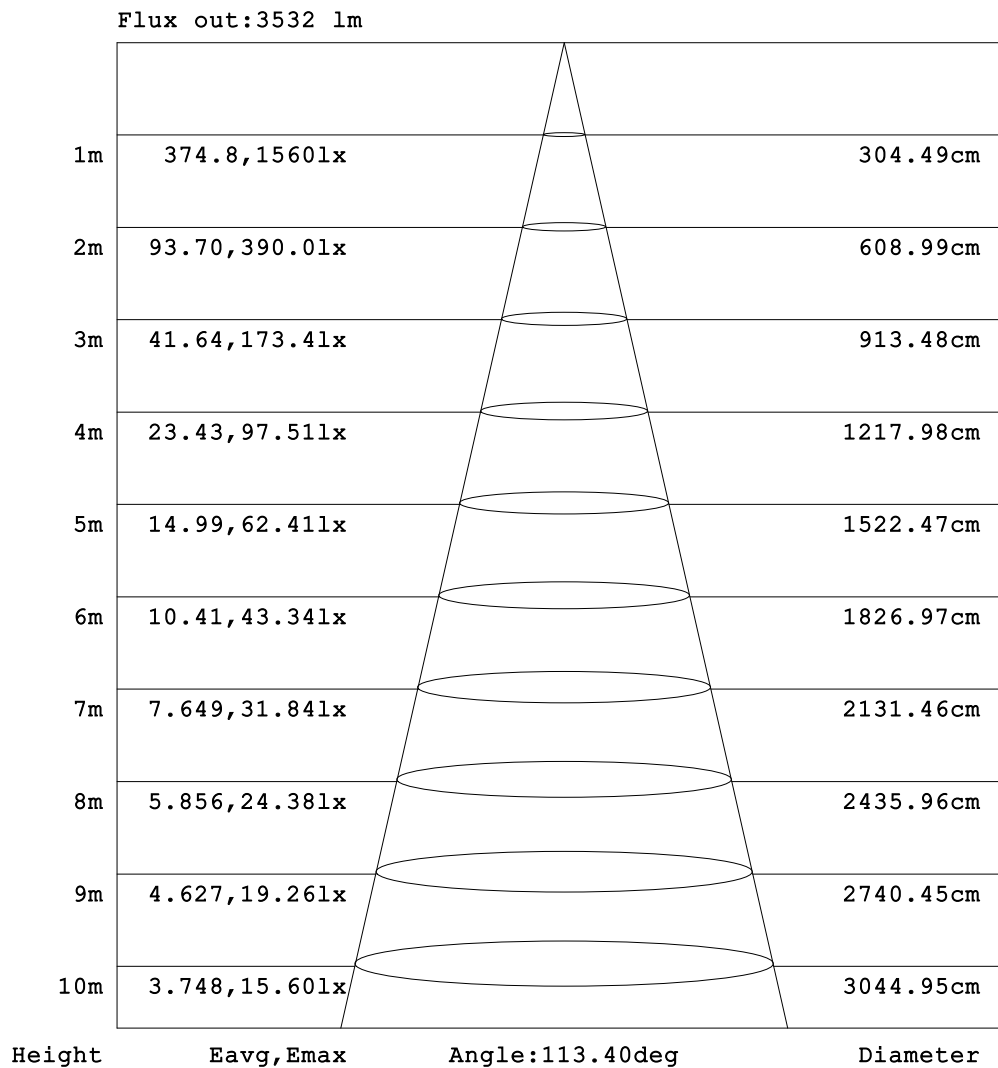


C Range: 0 - 360DEG
 C Interval: 90.0DEG
 Test Speed: HIGH
 Temperature:25.3DEG
 Operators:King
 Test Date:2023-06-08

γ Range: 0 - 120DEG
 γ Interval: 5.0DEG
 Test System:EVERFINE GO-2000B_V1 SYSTEM V2.0.404.6
 Humidity:65.0%
 Test Distance:9.950m [K=1.0251]
 Remarks:

AAI Figure

| | | |
|--|----------|------------------|
| Test:U:220.25V I:0.2149A P:46.021W PF:0.9725 Freq:49.99Hz Lamp Flux:4557.46x1 lm | | |
| NAME: ROMA -158100 | TYPE:LED | WEIGHT: |
| SPEC.:6000K | DIM.: | SERIAL No.:01 |
| MANUFACTURE:BBT LIGHTING | SUR.: | Shielding Angle: |



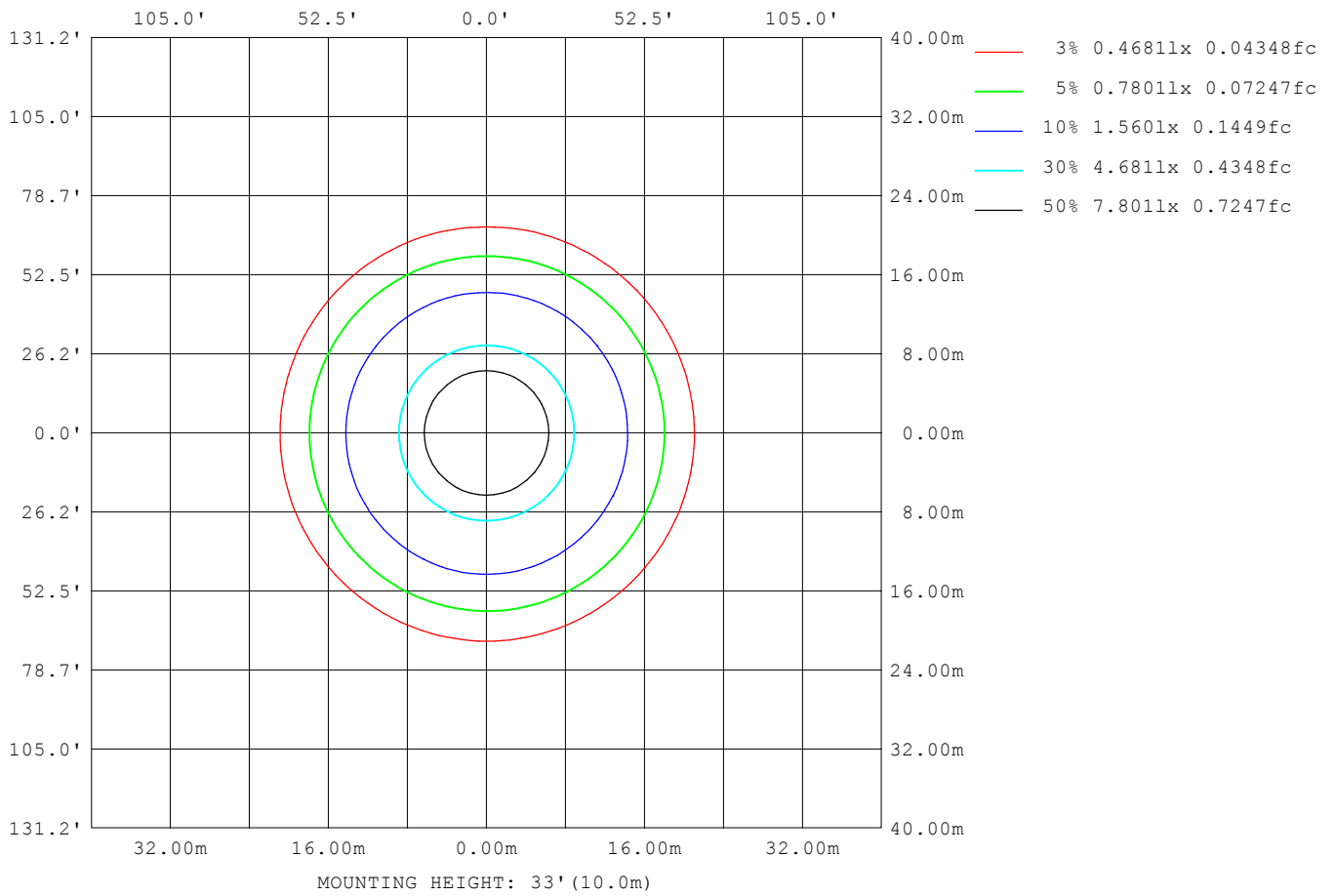
Note:The Curves indicate the illuminated area and the average illumination when the luminaire is at different distance.

C Range: 0 - 360DEG
 C Interval: 90.0DEG
 Test Speed: HIGH
 Temperature:25.3DEG
 Operators:King
 Test Date:2023-06-08

γ Range: 0 - 120DEG
 γ Interval: 5.0DEG
 Test System:EVERFINE GO-2000B_V1 SYSTEM V2.0.404.6
 Humidity:65.0%
 Test Distance:9.950m [K=1.0251]
 Remarks:

ISOLUX DIAGRAM

| | | |
|--|----------|------------------|
| Test:U:220.25V I:0.2149A P:46.021W PF:0.9725 Freq:49.99Hz Lamp Flux:4557.46x1 lm | | |
| NAME: ROMA -158100 | TYPE:LED | WEIGHT: |
| SPEC.:6000K | DIM.: | SERIAL No.:01 |
| MANUFACTURE:BBT LIGHTING | SUR.: | Shielding Angle: |



C Range: 0 - 360DEG
 C Interval: 90.0DEG
 Test Speed: HIGH
 Temperature:25.3DEG
 Operators:King
 Test Date:2023-06-08

γ Range: 0 - 120DEG
 γ Interval: 5.0DEG
 Test System:EVERFINE GO-2000B_V1 SYSTEM V2.0.404.6
 Humidity:65.0%
 Test Distance:9.950m [K=1.0251]
 Remarks:

LED Avg.L Report

| | | |
|--|----------|------------------|
| Test:U:220.25V I:0.2149A P:46.021W PF:0.9725 Freq:49.99Hz Lamp Flux:4557.46x1 lm | | |
| NAME: ROMA -158100 | TYPE:LED | WEIGHT: |
| SPEC.:6000K | DIM.: | SERIAL No.:01 |
| MANUFACTURE:BBT LIGHTING | SUR.: | Shielding Angle: |

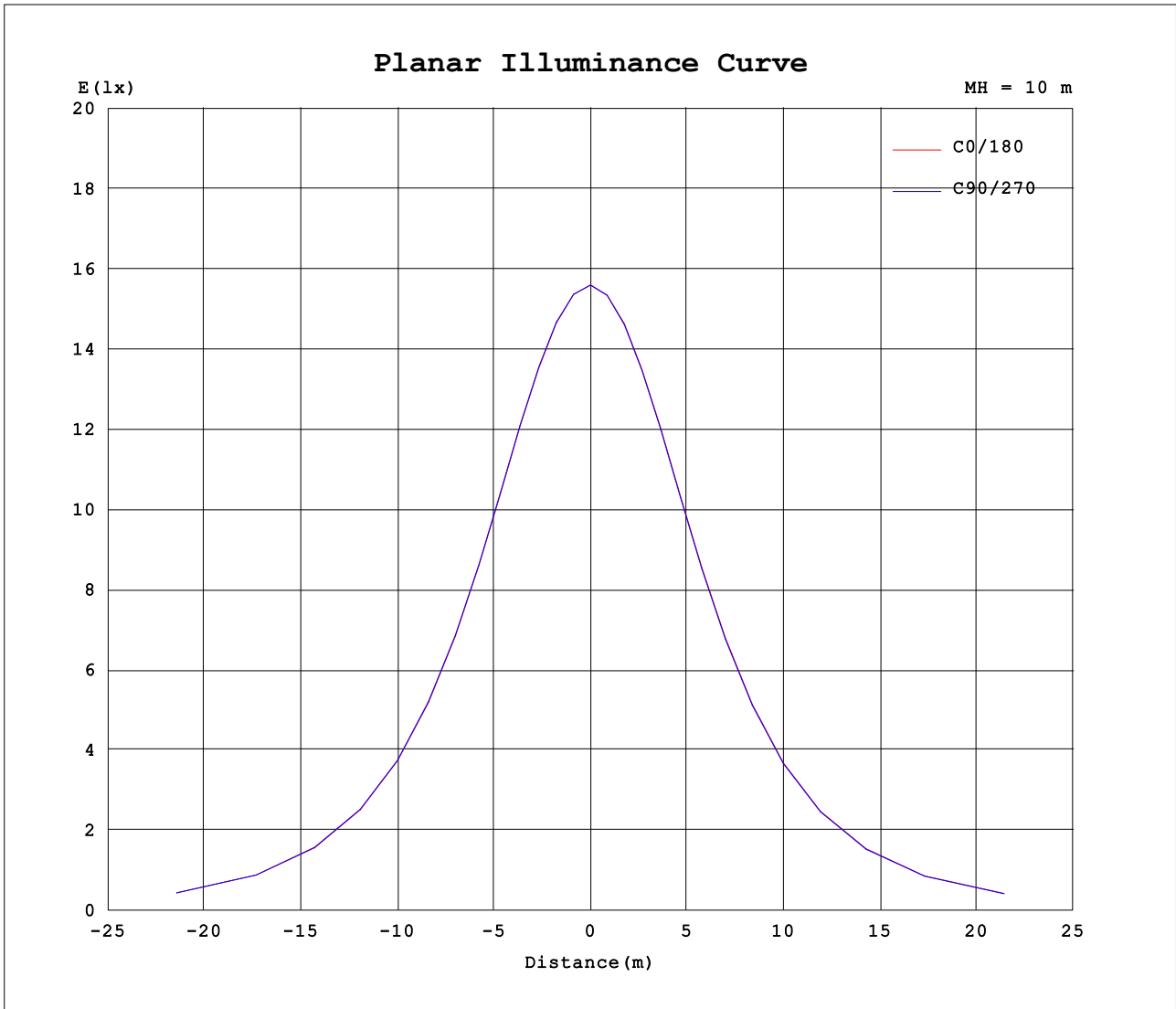
| AvgL | cd/m2 |
|------------------|-------|
| L_0~180 (65) av | 4575 |
| L_0~180 (75) av | 4151 |
| L_0~180 (85) av | 3622 |
| L_90~270 (65) av | 4567 |
| L_90~270 (75) av | 4118 |
| L_90~270 (85) av | 3563 |
| L_45 (65) av | 4565 |
| L_45 (75) av | 4123 |
| L_45 (85) av | 3570 |

Standard: GB/T 29293-2012

C Range: 0 - 360DEG
C Interval: 90.0DEG
Test Speed: HIGH
Temperature:25.3DEG
Operators:King
Test Date:2023-06-08

γ Range: 0 - 120DEG
 γ Interval: 5.0DEG
Test System:EVERFINE GO-2000B_V1 SYSTEM V2.0.404.6
Humidity:65.0%
Test Distance:9.950m [K=1.0251]
Remarks:

Planar Illuminance Curve



C Range: 0 - 360DEG
 C Interval: 90.0DEG
 Test Speed: HIGH
 Temperature: 25.3DEG
 Operators: King
 Test Date: 2023-06-08

γ Range: 0 - 120DEG
 γ Interval: 5.0DEG
 Test System: EVERFINE GO-2000B_V1 SYSTEM V2.0.404.6
 Humidity: 65.0%
 Test Distance: 9.950m [K=1.0251]
 Remarks:

LUMINOUS DISTRIBUTION INTENSITY DATA

| | | |
|--|----------|------------------|
| Test:U:220.25V I:0.2149A P:46.021W PF:0.9725 Freq:49.99Hz Lamp Flux:4557.46x1 lm | | |
| NAME: ROMA -158100 | TYPE:LED | WEIGHT: |
| SPEC.:6000K | DIM.: | SERIAL No.:01 |
| MANUFACTURE:BBT LIGHTING | SUR.: | Shielding Angle: |

Table--1

UNIT: cd

| C (DEG) γ (DEG) | 0 | 90 | 180 | 270 | | | | | | | | | | | | | | | |
|--------------------|------|------|------|------|--|--|--|--|--|--|--|--|--|--|--|--|--|--|--|
| 0 | 1560 | 1560 | 1560 | 1560 | | | | | | | | | | | | | | | |
| 5 | 1554 | 1555 | 1553 | 1552 | | | | | | | | | | | | | | | |
| 10 | 1534 | 1536 | 1532 | 1530 | | | | | | | | | | | | | | | |
| 15 | 1501 | 1504 | 1498 | 1494 | | | | | | | | | | | | | | | |
| 20 | 1455 | 1459 | 1451 | 1447 | | | | | | | | | | | | | | | |
| 25 | 1396 | 1401 | 1391 | 1386 | | | | | | | | | | | | | | | |
| 30 | 1326 | 1331 | 1319 | 1314 | | | | | | | | | | | | | | | |
| 35 | 1244 | 1250 | 1237 | 1231 | | | | | | | | | | | | | | | |
| 40 | 1154 | 1160 | 1144 | 1138 | | | | | | | | | | | | | | | |
| 45 | 1055 | 1060 | 1043 | 1036 | | | | | | | | | | | | | | | |
| 50 | 945 | 951 | 933 | 926 | | | | | | | | | | | | | | | |
| 55 | 830 | 837 | 816 | 809 | | | | | | | | | | | | | | | |
| 60 | 708 | 711 | 693 | 686 | | | | | | | | | | | | | | | |
| 65 | 583 | 587 | 566 | 559 | | | | | | | | | | | | | | | |
| 70 | 454 | 458 | 437 | 431 | | | | | | | | | | | | | | | |
| 75 | 328 | 329 | 310 | 304 | | | | | | | | | | | | | | | |
| 80 | 210 | 211 | 193 | 188 | | | | | | | | | | | | | | | |
| 85 | 99.8 | 102 | 87.7 | 81.9 | | | | | | | | | | | | | | | |
| 90 | 9.51 | 11.4 | 3.37 | 2.99 | | | | | | | | | | | | | | | |
| 95 | 2.63 | 1.88 | 2.32 | 2.35 | | | | | | | | | | | | | | | |
| 100 | 3.08 | 2.31 | 2.87 | 2.91 | | | | | | | | | | | | | | | |
| 105 | 3.42 | 2.78 | 3.42 | 3.44 | | | | | | | | | | | | | | | |
| 110 | 3.79 | 3.30 | 3.98 | 4.02 | | | | | | | | | | | | | | | |
| 115 | 4.17 | 3.80 | 4.49 | 4.54 | | | | | | | | | | | | | | | |
| 120 | 4.50 | 4.25 | 4.97 | 5.00 | | | | | | | | | | | | | | | |
| 125 | 0.00 | 0.00 | 0.00 | 0.00 | | | | | | | | | | | | | | | |
| 130 | 0.00 | 0.00 | 0.00 | 0.00 | | | | | | | | | | | | | | | |
| 135 | 0.00 | 0.00 | 0.00 | 0.00 | | | | | | | | | | | | | | | |
| 140 | 0.00 | 0.00 | 0.00 | 0.00 | | | | | | | | | | | | | | | |
| 145 | 0.00 | 0.00 | 0.00 | 0.00 | | | | | | | | | | | | | | | |
| 150 | 0.00 | 0.00 | 0.00 | 0.00 | | | | | | | | | | | | | | | |
| 155 | 0.00 | 0.00 | 0.00 | 0.00 | | | | | | | | | | | | | | | |
| 160 | 0.00 | 0.00 | 0.00 | 0.00 | | | | | | | | | | | | | | | |
| 165 | 0.00 | 0.00 | 0.00 | 0.00 | | | | | | | | | | | | | | | |
| 170 | 0.00 | 0.00 | 0.00 | 0.00 | | | | | | | | | | | | | | | |
| 175 | 0.00 | 0.00 | 0.00 | 0.00 | | | | | | | | | | | | | | | |
| 180 | 0.00 | 0.00 | 0.00 | 0.00 | | | | | | | | | | | | | | | |

C Range: 0 - 360DEG
 C Interval: 90.0DEG
 Test Speed: HIGH
 Temperature:25.3DEG
 Operators:King
 Test Date:2023-06-08

γ Range: 0 - 120DEG
 γ Interval: 5.0DEG
 Test System:EVERFINE GO-2000B_V1 SYSTEM V2.0.404.6
 Humidity:65.0%
 Test Distance:9.950m [K=1.0251]
 Remarks: